

5-24-16 RIM ROCK ROAD
TEXAS GRAND RANCH, HUNTSVILLE, TX

Markham
Realty

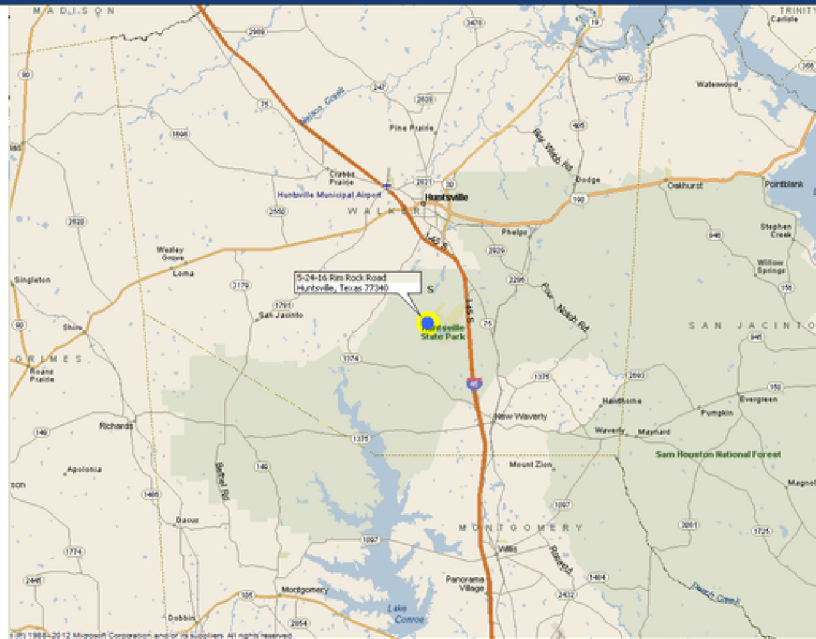
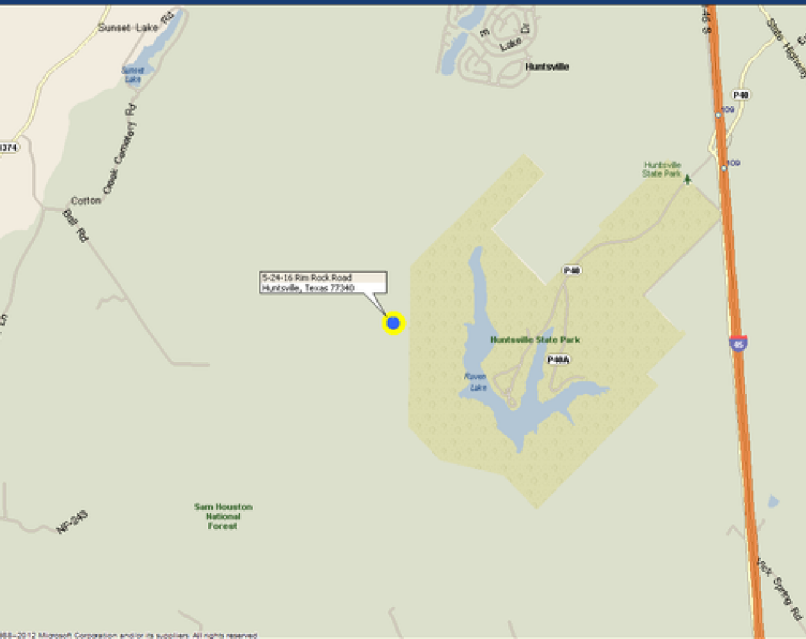


Boundary Lines Are Approximate

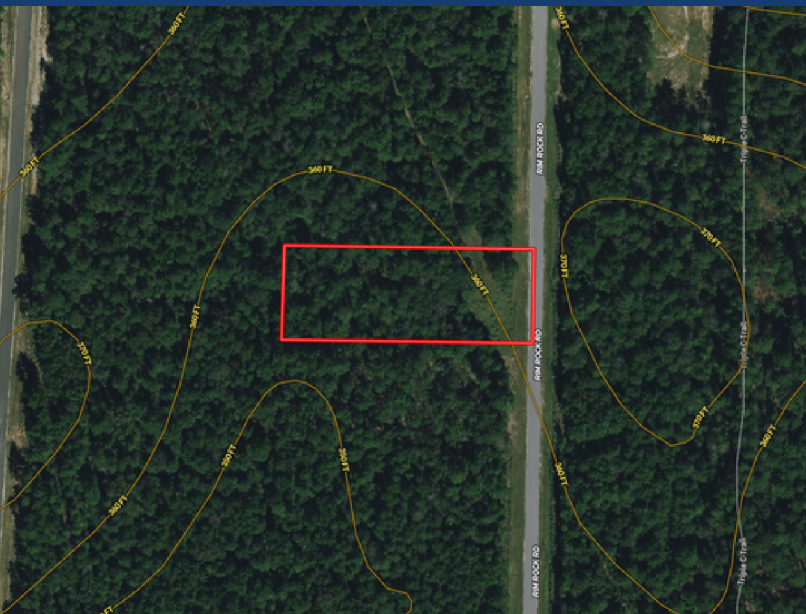
**2.25 ACRES - LEVEL - HIGH & DRY - PARTIALLY CLEARED
EASY ACCESS TO I-45!**

This lot is situated in the perfect section for privacy and serenity, with easy access to I-45 via the new neighborhood entrance. Choose your own builder and start building your custom home when you want. Mature oak trees speckle the interior of this lot, which is already partially cleared to make getting started easy. High-Speed Fiber Internet available. The neighborhood is surrounded by National Forest and Huntsville State Park - plenty of hiking trails, horseback riding, and biking. Come make your home in Texas Grand Ranch!

5-24-16 RIM ROCK ROAD



Head North on I-45 to Huntsville, Exit 102. At roundabout, 2nd exit to continue N on I-45 Feeder. Left on FM 1374 for 4 mi. Right on Dipping Vat, Left on Lonestar, Right on Rim Rock. Property will be on left in 0.5 miles.



Markham Realty
Selling Quality Texas Properties Since 1970
contact@markhamrealty.com
936-295-5989 | markhamrealty.com



Scan here for additional information & photos.



Information furnished is from sources deemed reliable, but is not guaranteed by Markham Realty, Inc. The offerings are subject to change in price, errors, omissions, prior sales, or withdrawal without notice. Square footage, acreage size and lot dimensions are approximate. All persons and firms named in this brochure are licensed brokers or salespersons. Markham Realty, Inc. will co-broker with any licensed Broker if Broker and/or agent accompanies his or her prospective buyer from the first (1st) showing forward.